



Immaculate Conception Church



4453 Kapia Road, Lihue HI 96766

808245-2432

www.icchurchlihue.com

icchurchkauai@rcchawaii.org

Deacon Bill Farias

PASTOR : REV.FR. AUGUSTINE UTHUPPU, MS

Deacon Dave Kane

OUR VISION

We, the Christian Community of Immaculate Conception, Lihue, are called to be Stewards of the Gospel.

Centered on the Holy Eucharist, we live our lives on the four pillars of stewardship: hospitality, prayer, formation and service.

This is our call.

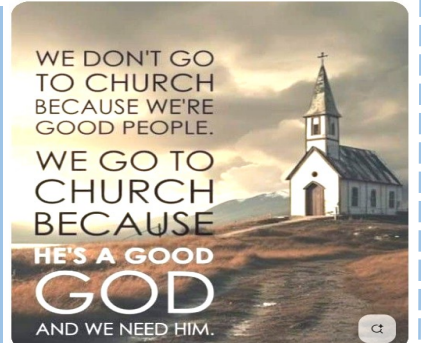
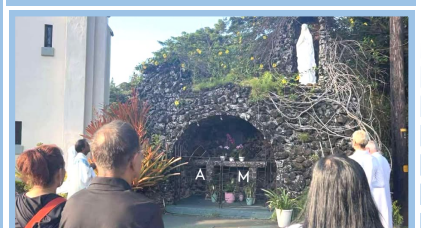


OUR MISSION

Responding to the call of Jesus and inspired by the example of the Blessed Mother, the Immaculate Conception, we live stewardship towards a holy way of life.



Happy Birthday Mama Mary!
Procession and serenade by our dear parishioners.



Feast of the Exaltation of the Cross– September 14, 2025

MASS TIMES

Weekday Mass (Monday-Saturday)
7:00 AM

Weekend Masses

Saturday Vigil: 5:00 PM

Sunday: 7:00 AM, 9:30 AM, 4:30 PM

Reconciliation (Confession)

Saturday: 4:00 PM—4:30 PM
Weekdays: By Appointment Only

Adoration of the Blessed Sacrament

First Friday of the Month—6:15 AM
(Devotion to the Sacred Heart of Jesus)
2nd, 3rd, 4th Fridays—6:00 PM @ Sisters' Convent

Novena to our Mother of Perpetual Help

Wednesday @ 6:30 AM

OFFICE HOURS

Monday—Friday @ 8:00—12:00 Noon

Gift Shop

8:00AM to 12nn Monday to Friday
Sunday—after every Mass

SACRAMENTS AND BLESSINGS

Baptism Preparations

Please call Deacon Dave Kane to arrange your child baptized.

Sacrament of Matrimony (Marriage) -

Couples must schedule an interview with Deacon Kane at least six months before a desired wedding date.

Sacrament of Anointing of the Sick -

Please contact the parish office.

Funeral Mass / Mass Intentions -Please contact the parish office.

House Blessings - Please call the parish office at least one week in advance to have your house blessed.

Car Blessings - Car blessings are done after every Mass (weekdays or Sundays).

OCIA (Order of Christian Initiation for Adults) You may contact Mrs. Millie Curtis for more details. Please call the parish office.

FIRST COMMUNION and CONFIRMATION

Classes start on September 22, 2025

FAITH FORMATION

LIFETEEN, EDGE, YOUTH & YOUNG ADULT

Continuing formation journey for youth age 13 to 35.

YOUTH & CHILDREN CHOIR

Schedule of practice:

Every 3rd & 4th Saturday of the Month @ 3:15 to 4:30 PM

Mass Sponsorship:

3rd Sunday @ 4:30 PM
4th Sunday @ 5:00 PM

OTHER MINISTRIES

Hospitality Sunday

Every 2nd Sunday of the month
After 7:00 & 9:30 AM Mass

General Cleaning of Church & Parish Hall

Every Friday right after the Mass

Stewards of God's Gift *God's gift of Time, Talent & Treasure*

Next weekend's second collection will be for the

La Salette Missionaries. They have been serving our Parish since 2015. Your generous support will help their Seminarians' studies to become future Missionaries of Our Lady of La Salette.

Thank you for your support!
May God Bless you all.

SUNDAY SUMMARY COLLECTION-Sept 6/7 2025

5PM Mass	\$ 1,722.00
7AM Mass	\$ 1,608.00
9:30AM Mass	\$ 2,531.00
4:30PM Mass	\$ 1,856.00
Total	\$ 7,717.00

Calendar

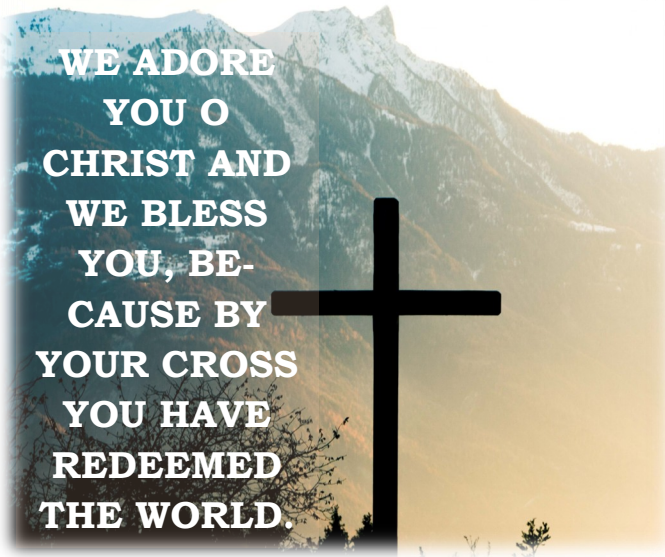
Sept 20	Social Night (Edge & Lifeteen) 6:30 PM @ the Parish Hall
Sept 19	Feast of Our Lady of La Salette
Sept 21	Commissioning of Catechist (9:30 AM) Second Collection (Missionaries of La Salette)
Sept 22	Religious Education Class starts
Oct 1-30	Family Rosary Crusade

Feast of the Exaltation of the Cross— September 14, 2025

Today's Readings Reflection



We celebrate this Feast For two reasons: (1) to understand the history of the discovery and recovery of the True Cross and (2) to appreciate better the importance of the symbol and reality



The first reading today (Nm 21:4b—9) describes how God healed the complaining Israelites through the brazen serpent.

The second reading (Phil 2:6-11) reminds us of that Jesus, "... humbled himself, becoming obedient to the point of death, even death on a cross,"

In today's Gospel, answering the question raised by Nicodemus, Jesus cites the example of how, when the Israelites were in the desert, the im-

paled brazen serpent (representing the healing power of God), which God commanded Moses to raise, saved from death the serpent-bitten Israelites who looked at it (Nm 21:4-9). Then Jesus explains how He is going to save the world by dying on the cross.

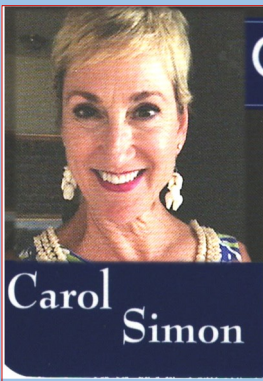
Life messages:

- 1)** We should honor and venerate the cross and carry it on our person to remind ourselves of the love God has for us and the price Jesus paid for our salvation.
- 2)** The cross will give us strength in our sufferings and remind us of our hope of eternal glory with the rose Lord. With St. Paul, we express our belief that the "message of the cross is foolishness only to those who are perishing" (1Cor 1:18-24), and that we should "glory in the cross of Our Lord" (Gal 6:14).
- 3)** We should bless ourselves with the sign of the cross to remind ourselves that we belong to Christ Jesus, to honor the Most Holy Trinity, and to ask the Triune God to bless us, save us and protect us from all danger and evil.
- 4)** The crucifix should remind us that we are forgiven sinners and, hence, we are expected to forgive those who offend us and to ask for forgiveness whenever we offend others or hurt their feelings.

- - Fr. Gus, MS. - -

This bulletin is sponsored in part by our generous donors on the back page. Mahalo!

Feast of the Exaltation of the Cross– September 14, 2025



COLDWELL BANKER
ISLAND PROPERTIES

carol.simon@islandproperties.com

808-205-7179

www.csimon@islandproperties.com

Kaua'i, Hawai'i

RS - 82476

**5% tithe of my
commission will be
donated to this Church.**

DON & PHYLLIS CELEBRADO

Owners/Parishioners

Classic Deli Sandwiches

Fresh Baked Breads



**"The Best
Sandwiches
on Kauai"**

(808)245-7115

DELI & BREAD CONNECTION INC.

KUKUI GROVE SHOPPING CENTER

3-2600 KAUMUALII HWY. #1648

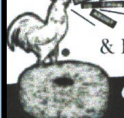
LIHUE, KAUAI, HI 96766

FAX: (808) 245-3492

**DAYLIGHT
DONUTS**

"The Best Donuts on Kauai"

Donuts for all occasions



Fresh Coffee
& Donuts made daily

Open every morning

7 days a week

Behind Ace Hardware, Lihue

(808) 245-7414

Owned & Operated by the
Celebrado Family

KAUAI
MEMORIAL GARDENS
& FUNERAL HOME



**Locally owned and operated
Complete Funeral Cremation
& Memorial Service**

Even if your cemetery property is
elsewhere, we can still help you with
funeral services.

Kauai Memorial Gardens

"A garden for the living in

Memory of the Departed"

4716 Maalo Rd Lihue (Wailua Road)

Kauai Memorial Trus Plan

Pre Need Planning Available

"It is better to own one and not need
it, than to need one and not have it"

245-3661

Serving the People of Kauai since
1972

Place your ads here.

Please call the Parish Office
for more information

Place your ads here.

Please call the Parish Office
for more information

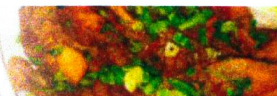


Local Hawaiian Restaurant

Monday - Saturday

11am-8pm

Sunday - CLOSED



4100 Rice Street • Lihue, Hawaii, 96766

(808) 245-4772

**TIRE
WAREHOUSE**
Serving Kauai For 45 Years

- Shock Absorbers
- Tires and Brakes
- Computerized Tire Balancing
- Front End Parts
- Wheel Alignment
- Split Rims
- Safety Checks

MON-TUES, THURS-FRI
8AM-5PM

WED & SAT 8AM-1PM

Free Pickup in LIHUE

**FOR FREE ESTIMATE
ASK FOR GEORGE OR LAURIE**

245-6754

3028 Aukele St. - Lihue
(Industrial park II)

Place your ads here.

Please call the Parish Office
for more information

Place your ads here.

Please call the Parish Office for
more information

Place your greetings here.

Please call the Parish Office for more information

Happy Feast Day of Our Lady of La Salette!

Fr. Gus is a religious priest of Missionaries of La Salette.