



Immaculate Conception Church



4453 Kapia Road, Lihue HI 96766

808245-2432

www.icchurchlihue.com

icchurchkauai@rcchawaii.org

Deacon Bill Farias

PASTOR : REV.FR. AUGUSTINE UTHUPPU, MS

Deacon Dave Kane

OUR VISION

We, the Christian Community of Immaculate Conception, Lihue, are called to be Stewards of the Gospel.

Centered on the Holy Eucharist, we live our lives on the four pillars of stewardship: hospitality, prayer, formation and service.

This is our call.

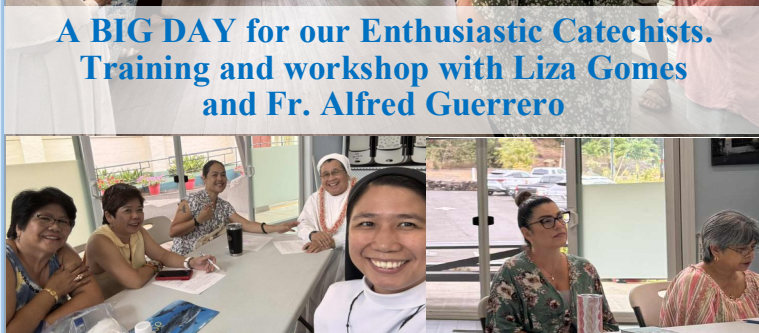


OUR MISSION

Responding to the call of Jesus and inspired by the example of the Blessed Mother, the Immaculate Conception, we live stewardship towards a holy way of life.



**A BIG DAY for our Enthusiastic Catechists.
Training and workshop with Liza Gomes
and Fr. Alfred Guerrero**



**1 Peter 4:10:
"As each one has received a gift, use it to serve one another as good stewards of God's varied grace".**

23rd Sunday in Ordinary Time– September 7, 2025

MASS TIMES

Weekday Mass (Monday-Saturday)
7:00 AM

Weekend Masses

Saturday Vigil: 5:00 PM

Sunday: 7:00 AM, 9:30 AM, 4:30 PM

Reconciliation (Confession)

Saturday: 4:00 PM—4:30 PM
Weekdays: By Appointment Only

Adoration of the Blessed Sacrament

First Friday of the Month—6:15 AM
(Devotion to the Sacred Heart of Jesus)
2nd, 3rd, 4th Fridays—6:00 PM @ Sisters' Convent

Novena to our Mother of Perpetual Help

Wednesday @ 6:30 AM

OFFICE HOURS

Monday—Friday @ 8:00—12:00 Noon

Gift Shop

8:00AM to 12nn Monday to Friday
Sunday—after every Mass

SACRAMENTS AND BLESSINGS

Baptism Preparations

Please call Deacon Dave Kane to arrange your child baptized.

Sacrament of Matrimony (Marriage) -

Couples must schedule an interview with Deacon Kane at least six months before a desired wedding date.

Sacrament of Anointing of the Sick -

Please contact the parish office.

Funeral Mass / Mass Intentions -Please contact the parish office.

House Blessings - Please call the parish office at least one week in advance to have your house blessed.

Car Blessings - Car blessings are done after every Mass (weekdays or Sundays).

OCIA (Order of Christian Initiation for Adults) You may contact Mrs. Millie Curtis for more details. Please call the parish office.

FIRST COMMUNION and CONFIRMATION

Classes start on September 22, 2025

FAITH FORMATION

LIFETEEN, EDGE, YOUTH & YOUNG ADULT

Continuing formation journey for youth age 13 to 35.

YOUTH & CHILDREN CHOIR

Schedule of practice:

Every 3rd & 4th Saturday of the Month @ 3:15 to 4:30 PM

Mass Sponsorship:

3rd Sunday @ 4:30 PM
4th Sunday @ 5:00 PM

OTHER MINISTRIES

Hospitality Sunday

Every 2nd Sunday of the month
After 7:00 & 9:30 AM Mass

General Cleaning of Church & Parish Hall

Every Friday right after the Mass

Stewards of God's Gift *God's gift of Time, Talent & Treasure*

Novena in honor of our **Lady of La Salette** will begin on Sept. 11 to Sept. 18 before the 7:00 AM Mass.

Feast Day will be on Sept. 19.

Please join us.

SUNDAY SUMMARY COLLECTION-August 23/34

| | |
|-------------|-------------|
| 5PM Mass | \$ 1,000.00 |
| 7AM Mass | \$ 1,455.00 |
| 9:30AM Mass | \$ 3,196.00 |
| 4:30PM Mass | \$ 860.00 |
| Total | \$ 6,511.00 |
| | |

Calendar

| | |
|---------|---|
| Sept 14 | Hospitality Sunday (Coffee-Donut Sunday) |
| Sept 20 | Social Night (Edge & Lifeteen) 6:30 PM @ the Parish Hall |
| Sept 21 | Commissioning of Catechist (9:30 AM) |
| Sept 22 | Religious Education Class starts |

23rd Sunday in Ordinary Time— September 7, 2025

Today's Readings Reflection



Today's readings challenge us to the true Christian discipleship of total commitment to the will of God, putting God first in our lives.

"...whoever does not
carry their cross and
follow me cannot be
my disciple."
~ Luke 14:27



The first reading, taken from the Book of Wisdom, instructs us to ask for the gifts of discernment and strength from the Holy Spirit so that we may do the will of God as His true disciples.

The Responsorial Psalm (Ps 90), instructs true disciples to lead holy lives by remaining constantly aware of the brevity and uncertainty of life.

The second reading, taken from St. Paul's letter to Philemon, teaches us that detachment and renunciation are necessary for a true disciple of Christ.

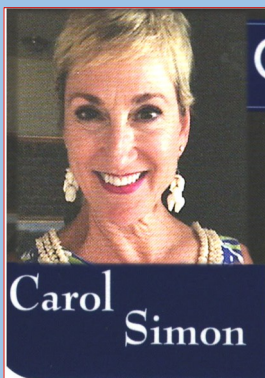
Today's Gospel reminds us to count the cost of being a disciple and follower of Christ because the cost is high: true Christian discipleship requires one to "renounce" both earthly possessions and possessions of the heart (i.e., one's relationships). In today's Gospel, Jesus lays out four conditions for true Christian discipleship.

- 1)** Renounce too much attachment to family, giving priority to God and His commandments.
- 2)** Break off the excessive attachment to possessions by leading a detached life, willingly sharing one's blessings with others.
- 3)** Be ready to carry the cross and follow Jesus by **i)** gracefully accepting and lovingly offering our pains and suffering with Jesus on the cross for the salvation of all of us **ii)** sharing our blessings sacrificially with others **iii)** accepting the pain involved in controlling our evil habits and tendencies and **iv)** by welcoming the pain and humiliation we suffer in professing our faith in public and in practicing it in daily life, standing with Jesus, his ideas and ideals.
- 4)** Calculate the cost involved in following Jesus. Using the two parables of the tower-builder and the king defending his country, Jesus says we must think long and hard about Christian discipleship before we commit ourselves to Jesus in this full, life-long surrender.

- - Fr. Gus, MS. - -

This bulletin is sponsored in part by our generous donors on the back page. Mahalo!

23rd Sunday in Ordinary Time– September 7, 2025



COLDWELL BANKER
ISLAND PROPERTIES

carol.simon@islandproperties.com

808-205-7179

www.csimon@islandproperties.com

Kaua'i, Hawai'i

RS - 82476

**5% tithe of my
commission will be
donated to this Church.**

DON & PHYLLIS CELEBRADO

Owners/Parishioners

Classic Deli Sandwiches

Fresh Baked Breads



**"The Best
Sandwiches
on Kauai"**

(808)245-7115

DELI & BREAD CONNECTION INC.

KUKUI GROVE SHOPPING CENTER

3-2600 KAUMUALII HWY. #1648

LIHUE, KAUAI, HI 96766

FAX: (808) 245-3492

**DAYLIGHT
DONUTS**

"The Best Donuts on Kauai"

Donuts for all occasions



Fresh Coffee
& Donuts made daily

Open every morning
7 days a week

Behind Ace Hardware, Lihue

(808) 245-7414

Owned & Operated by the
Celebrado Family

KAUAI
MEMORIAL GARDENS
& FUNERAL HOME



Locally owned and operated
Complete Funeral Cremation
& Memorial Service

Even if your cemetery property is
elsewhere, we can still help you with
funeral services.

Kauai Memorial Gardens

"A garden for the living in
Memory of the Departed"

4716 Maalo Rd Lihue (Wailua Road)

Kauai Memorial Trus Plan

Pre Need Planning Available

"It is better to own one and not need
it, than to need one and not have it"

245-3661

Serving the People of Kauai since
1972

**Place your ads
here.**

Please call the Parish
Office for more infor-
mation

**Place your ads
here.**

Please call the Parish
Office for more infor-
mation

Smiley's

Local Grinds

Local Hawaiian Restaurant

Monday - Saturday
11am-8pm

Sunday - CLOSED

4100 Rice Street • Lihue, Hawaii, 96766

(808) 245-4772

Place your ads here.

Please call the Parish Office
for more information

**TIRE
WAREHOUSE**
Serving Kauai For 45 Years

- Shock Absorbers
- Tires and Brakes
- Computerized Tire
Balancing
- Front End Parts
- Wheel Alignment
- Split Rims
- Safety Checks

MON-TUES, THURS-FRI
8AM-5PM

WED & SAT 8AM-1PM

Free Pickup in LIHUE

FOR FREE ESTIMATE

ASK FOR GEORGE OR LAURIE

245-6754

3028 Aukele St. - Lihue
(Industrial park II)

**Place your ads
here.**

Please call the Parish
Office for more infor-
mation

**Place your ads
here.**

Please call the Parish
Office for more infor-
mation

Place your greetings here.

Please call the Parish Office for more information